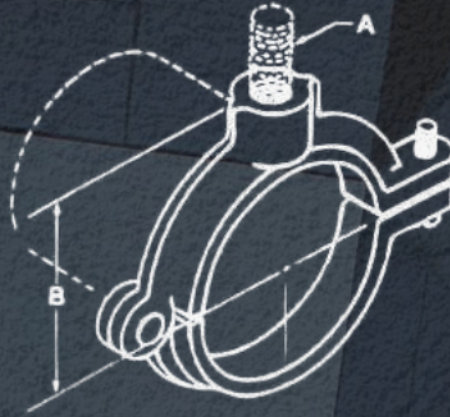


LIX-204

Split Ring Clamps



FUNCTION: Designed for non-insulated stationary pipe lines in either a horizontal or vertical position. The hinged design allows for a quick installation.

► **APPROVALS:** Complies with Federal Specifications A-A-1192A (Type 12) and Manufacturer's Standardization Society ANSI/SP-69 and SP-58 (Type 12).

► **MATERIAL:** Malleable iron

► **FINISH:** Plain, Electro-galvanized, Zinc Rich Composite

	A		B	Max. Rec. Load/lbs.	Wt. Each (in lbs.)
	Pipe Thread	Bolt Thread			
3/8	1/4	3/8	13/15	180	0.13
1/2	1/4	3/8	7/8	180	0.14
3/4	1/4	3/8	1	180	0.16
1	1/4	3/8	1 1/8	180	0.18
1 1/4	1/4	3/8	1 5/16	180	0.22
1 1/2	1/4	3/8	1 7/16	180	0.38
2	1/4	3/8	1 11/16	180	0.44
2 1/2	1/2	1/2	2 1/8	300	1.05
3	1/2	1/2	2 7/18	300	1.40
4	1/2	1/2	3	300	1.60

Measurements are subject to 5% tolerance

*Due to continuous improvement, product specifications are subject to change without prior notice.