

# LIX-304

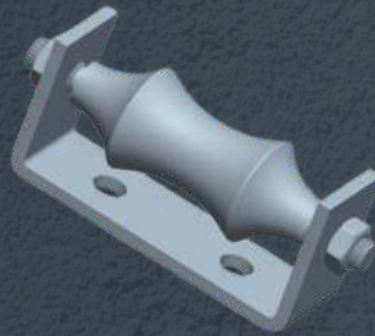
## Pipe Roller Chair

**Material:** Steel with Cast Iron Holler

**Finish:** Electro Galvanized/Zinc Rich Composite

**Designed for Suspending Pipe Where Longitudinal Movement and Vertical Adjustment is required**

**Comply with Federal Specification WW-H-171E and American Manufacturers Standardization Society MSS SP69 & SP 58(Type 44)**



Nominal Pipe Size	Dimensions (mm)				Max. Rec.Load	
	D	A	B	Bracket Size	IBS	KG
2"	110	35	40	6×32	300	135
2-1/2"	110	35	40	6×32	600	270
3"	145	50	45	6×32	600	270
3-1/2"	145	50	45	8×40	600	270
4"	180	50	50	8×40	700	315
5"	215	75	55	10×50	700	315
6"	250	80	60	10×50	1000	450
8"	285	85	75	12×50	1300	585
10"	345	130	90	12×50	1700	765
12"	395	140	105	12×50	2300	1035
14"	440	165	120	12×50	3100	1395
16"	480	210	140	12×75	3900	1755
18"	525	235	155	12×75	4200	1890
20"	555	260	165	12×75	4500	2025
24"	665	310	200	16×100	6000	2700

\* Measurements are subject to  $\pm 5\%$  tolerance

\* Due to continuous improvement, product specifications are subject to change without prior notice.

Measurements are subject to 5% tolerance.

Due to continuous improvement, product specifications are subject to change without prior notice.