

Single Pipe Roller Support

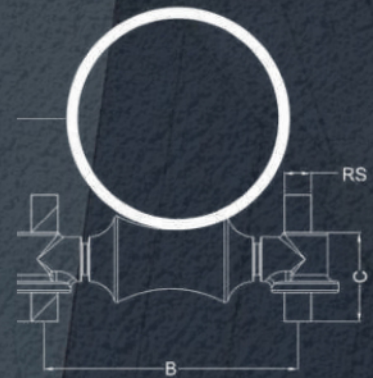
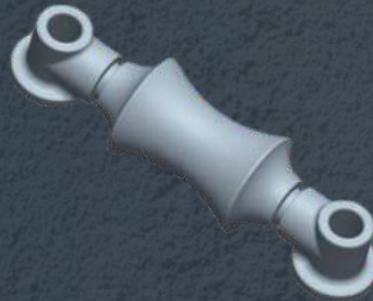
Material: Steel Axle with Cast Iron Roller

Finish: Plain or Hot Dipped Galvanized

Designed for Suspending Pipe Where Longitudinal Movement and Vertical Adjustment is required.

Comply with Federal Specification WW-H-171E and

American Manufactures Standardization Society MSS SP-69 & SP-58 (Type 41)



Nominal Pipe Size	RS	A	B	C	Max. Rec. Load	
					LBS	KG
2-1/2"	1/2	3 9/16	4 7/8	1 13/16	600	272
3"	1/2	3 7/8	5 5/8	1 13/16	700	318
3-1/2"	1/2	4 3/8	6 1/8	1 13/16	750	340
4"	5/8	5	6 11/16	2 1/4	750	340
5"	5/8	5 13/16	7 15/16	2 1/4	750	340
6"	3/4	7 3/16	9 9/16	2 5/8	1070	485
8"	7/8	8 7/16	12	3 1/16	1350	612
10"	7/8	9 5/8	14	3 1/16	1730	785
12"	7/8	10 7/8	15 3/4	3 3/16	2400	1089
14"	1	12	17 5/8	3 1/2	3130	1420
16"	1	13 1/16	19 5/16	3 9/16	3970	1801
18"	1	14 9/16	21 5/8	3 9/16	4200	1905
20"	1 1/4	17 3/8	24 1/8	4 5/16	4550	2064
24"	1 1/4	17 3/8	28 3/8	4 15/16	6160	2794
30"	1 1/2	20 15/16	35 3/8	5 9/16	7290	3307

Measurements are subject to 5% tolerance

Due to continuous improvement, product specifications are subject to change without prior notice.