

## Rubber Support Inserts

Desity: 1400kg/m<sup>2</sup>

Thermal Conductivity: 0.16W/m°C ▶

Temperature Range: -20°C To 110°C ▶

Very High Load Bearing Capacity

Tanque And Groove Design For Small Size ▶

Excellent Resistance To Deterioration Or Distortion

Material: Compounded Rubber

Used At The Supporting Points Of Insulated Pipes To Prevent Crushing Of Insulation

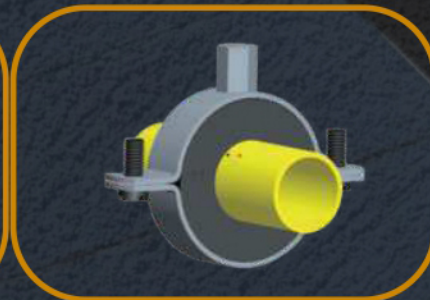
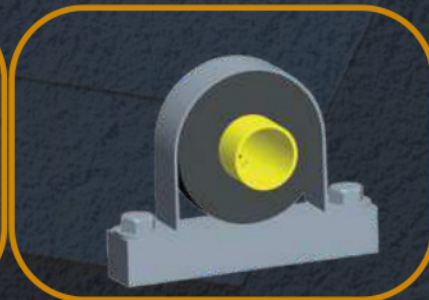
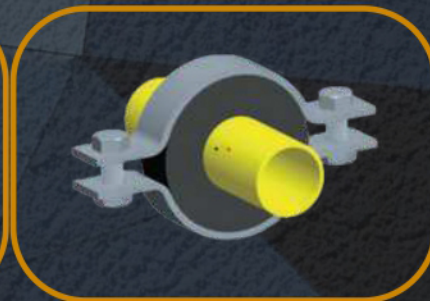
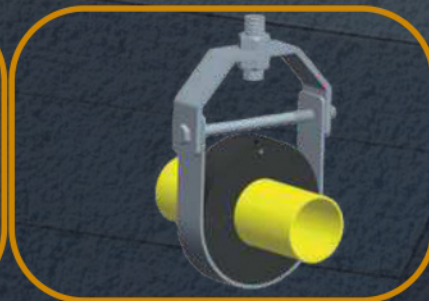
Different Thickness (T) is available (19mm, 25mm, 32mm, 38mm, 50mm ▶  
(65mm, 75mm, 100mm

Standard Width (W) for Rubber Support Inserts

to 2" --- 25mm "1/2

to 5" 38mm "2-1/2

to above --- 50mm "6



Measurements are subject to 5% tolerance.

Due to continuous improvement, product specifications are subject to change without prior notice.