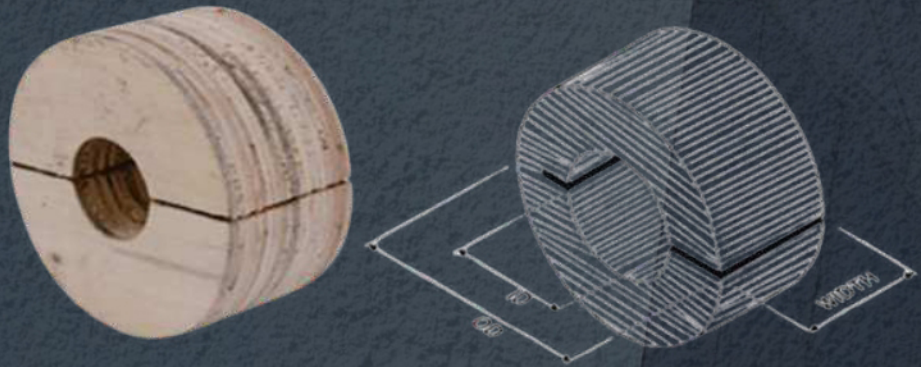


Wooded Support Inserts

Material: White wood (red wood & oil treated wood)
 Standard Widths 40mm, 50mm, 80mm, 100mm, Non standard widths also available
 Thermal Resistance: Excellent, Moisture effects are minimal
 Approvals: Designed to meet BS 3974-1.1974
 Sound Level: D. Response is minimal
 Sound Resistance: In significant



SELECTION TABLE

PIPE SIZE (OD)		WS WIDTH	T = INSULATION THICKNESS = WS THICKNESS							
Steel	Copper	W mm	13mm	19mm	25mm	32mm	38mm	50mm	63mm	75mm
	15mm		×		×					
1/2"	22mm		×		×	×				
3/4"	28mm		×	×	×	×	×	×	×	×
1"	35mm		×	×	×	×	×	×	×	×
1 1/4"	42mm	25mm		×	×	×	×	×	×	×
1 1/2"				×	×	×	×	×	×	×
	54mm			×	×	×				
2"				×	×	×	×	×	×	×
	67mm			×	×	×				
2 1/2"	76mm			×	×	×	×	×	×	×
3"				×	×	×	×	×	×	×
	108mm	38mm			×		×	×	×	×
4"					×		×	×	×	×
5"	141mm				×		×	×	×	×
	159mm				×					
6"					×		×	×	×	×
8"		50mm			×		×	×	×	×
10"					×		×	×	×	×
12"								×	×	×
14"										

Measurements are subject to 5% tolerance.

Due to continuous improvement, product specifications are subject to change without prior notice.